

WILD LIFE TOUR OF SRI LANKA

(ALL PRICES ARE VALID TILL 31/10/2014)

PRICE BASED ON,

02 - 15 PAX - US\$ 1 100 PER PERSON

Single room supplement US\$ 320.00 per person

HIGH TEA AT THE GRAND HOTEL

ELEPHANT ORPHANAGE

JEEP SAFARIS

VISIT A TEA PLANTATION/FACTORY

VISIT TO THE TURTLE HATCHERY

DAY 01 AIRPORT / NEGOMBO – PARADISE BEACH HOTEL
(03 star) (Distance between Airport to Negombo – 15 KMS / 1/2 hrs)



Arrive in Sri Lanka. Met on arrival by our company representative & tour GUIDE. Free refreshments – mineral water & fresh fruits (Pineapple & Banana) will be served in the coach. Thereafter transfer to hotel and check-in. Leisure. Dinner and overnight stay.

DAY 02 NEGOMBO / PINNAWALA / MINNERIYA / POLONNARUWA –
HOTEL SUDU ARALIYA (03 star) (Distance between Negombo to
Polonnaruwa 215 KMS / 4 1/2 hrs)

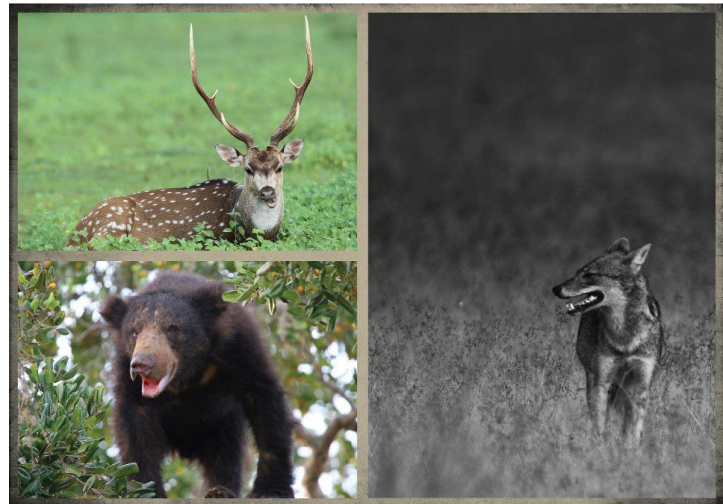


After breakfast leave for Pinnawala. Visit the only Elephant Orphanage in the world and witness the baby Elephants bottle fed with milk. Then go to the river for a bath. Leave for Minneriya wild Life National Park and Jeep safari to watch wild Asian Elephants. Proceed to Polonnaruwa and check-in at hotel.
Dinner and overnight



DAY 03 POLONNARUWA / WASGAMUWA – WILLY'S SAFARI
HOTEL

(03 star) (Distance between Polonnaruwa to Wasgamuwa – 110
KMS)



After breakfast, leave for Wasgamuwa and check-in at hotel. Evening Jeep services to visit the wild life National Park. WASGAMUWA NATIONAL PARK, located in the districts of Matale and Polonnaruwa and bordered by the 'Mahaweli' river was declared as a National Park in 1984.

One can see Elephant and bear, birds, fresh water fish, reptiles, butterflies any many more. Evening return to by evening for diiner and .

DAY 04 WASGAMUWA / MATALE / KANDY – THILANKA HOTEL (03 star)
(Distance between Wasgamuwa to Kandy - 140 KMS)



After breakfast, drive through the beautiful knuckles mountain range to Kandy. En-route visit a batik factory and a spice garden at Matale. Arrive in Kandy and check-in to hotel. Kandy is the last Kingdom of Sri Lanka which was conquered by the British in 1815. Evening Kandy city tour and witness a Kandyan cultural dance performance. Visit the Kandy Temple where the Sacred Tooth Relic of Lord Buddha is placed in a chamber. About 1000 devotees worship at the temple everyday.

Dinner & overnight

DAY 05 KANDY / NUWARA-ELIYA – SUMMER HILL BREEZE HOTEL (03 star)
(Distance Kandy to Nuwara-Eliya - 80 KMS)



After breakfast, visit the **Udawatta Kele Sanctuary**, often spelled as Udawattakele, is a historic forest reserve on a hill-ridge in the city of Kandy. It was also known as "Uda Wasala Watta" means "the garden situated above the royal palace". It is famous for its great variety of plant species, especially lianas, shrubs and small trees. Many of the mammals that inhabit Sri Lanka can be seen here. Several kinds of snakes and other reptiles may also be seen. This sanctuary was designated as a forest reserve in 1856, and became a sanctuary in 1938. Thereafter leave for Nuwara-Eliya visiting the Ramboda water-falls and a tea factory, a tea plantation on-route. The influence of climatic conditions imparts to the product a variety of flavors and aromas, synonymous with quality. The cultivation and manufacture of tea is presently a highly skilled, scientific and technical process, with Sri Lanka producing some of the most fragrant teas in the world.



Drive through the tea plantations and arrive in Nuwara-Eliya. Check-in at hotel. In the evening visit the **Nuwara-Eliya town centre**. Nuwara Eliya which means the "city of lights" is also the city of eternal spring, where the air is pure, cool and distilled up through 1,884 meters; windswept peaks lie shrouded in mist, while tea pluckers wind their way among tea bushes. The setting is a reminder of the English country-side. Return to hotel for dinner and overnight stay.

DAY 06 NUWARA-ELIYA / YALA – CAMP SITE (Tented camps)
(Distance Nuwara-Eliya to Yala – 220 KMS)



After breakfast, proceed to Yala camp site driving through the beautiful mountains. Witness the Rawana water-fall en-route. Arrive at the camp site and relax.

DAY 07 YALA – CAMP SITE (Tented camps)



Evening Jeep services to visit the Yala National Park. The Park is situated in the southeastern corner of the island. It is mainly thorny scrub forest, reminiscent of the African bush, and provides the visitor's good chance of seeing animals. Animals that could be seen in herds are Elephants, deer species, wild buffaloes, wild boar, monkeys and a variety of other species such as crocodiles, peacocks, and if you are lucky the bear and leopard. Evening return to the camp site for dinner and overnight stay.

After breakfast, full day safari including lunch at the camp-site. Evening SPECIAL B.B.Q. DINNER for the group. Overnight stay.

DAY 08 YALA / GALLE / HIKKADUWA – HIKKADUWA BEACH HOTEL (03 star) (Distance between Yala to Hikkaduwa 200 KMS)



After breakfast, proceed to Galle. Visit Galle the south coast's major city, whose oldest landmark is the massive 17th century Portuguese and Dutch Fort in which the central city is contained. The journey to Galle is along the palm-fringed beaches. Visit the Dutch Fort and the city of Galle. As you walk through the streets you can see strong Dutch influences in the architecture, along with some old British residences and mosques with an Arabian influence. Thereafter proceed to Hikkaduwa and check-in to hotel. Relax by the beach. Dinner and overnight stay.

DAY 09 HIKKADUWA – HIKKADUWA BEACH HOTEL



After breakfast, visit the Kosgoda turtle hatchery and return to the hotel. Travel in a glass bottom boat ride to witness the coral reef. Relax by the beach. Dinner and overnight stay.



DAY 10 HIKKADUWA / AIRPORT – DEPARTURE
(Distance from Hikkaduwa to Airport 140 KMS)

After breakfast transfer to Airport in time for the departure flight.
(Journey to Airport 03 hours)

PRICE INCLUDES THE FOLLOWING SERVICES:

- ✓ Met & assistance on Arrival & Departure
- ✓ Accommodation sharing double room on HB basis during the tour
- ✓ Transportation,

Max. 06 pax with A/C Micro van with English speaking driver

Max. 15 pax with A/C Coach with English speaking guide

- ✓ Visits according to program
- ✓ Jeep service to visit the National Parks
- ✓ Entrance fees to specified sites
- ✓ Cultural show in Kandy

OUR PRICE DOES NOT INCLUDE:

- ✓ Expenses of a personal nature
- ✓ Alcoholic beverages & mineral water
- ✓ Lunch during the tour
- ✓ Tips & porter charges
- ✓ Services other than those specified

END OF TOUR